

**SUPPLEMENTARY TABLE I. Components of risk scores**

<b>Sequential Organ Failure Assessment score</b>			
<b>Components, unit</b>	<b>Values</b>	<b>Assigned score</b>	<b>Definitions or alternative ICD-9-CM codes</b>
PaO <sub>2</sub> /FiO <sub>2</sub> , kPa	≥53.3	0	Laboratory results: PaO <sub>2</sub> ≥10
	40-53.2	1	(i) Laboratory results: PaO <sub>2</sub> <10; or (ii) Respiratory failure ICD-9: 518.81, 648.90(94), 648.93(870); or (iii) Respiratory arrest ICD-9: 799.1; or (iv) Other pulmonary insufficiency ICD-9: 397.1, 424.3, 518.5, 518.82
	26.7-39.9	2	Not applicable
	≤26.5 and not ventilated	2	Laboratory results: PaO <sub>2</sub> ≤5.6
	13.3-26.5 and ventilated	3	Laboratory results: PaO <sub>2</sub> ≤5.6 and ventilated
	<13.3 and ventilated	4	Not applicable
Mechanical ventilation/NIV			Intubation, mechanical ventilation, CPAP, or BiPAP ICD-9: 20.01, 20.1, 89.38, 93.90, 93.99, 93.91, 96.70, 96.71, 96.72
Platelets, ×10 <sup>3</sup> /μL	≥150	0	Laboratory results: platelets
	100-149	1	
	50-99	2	
	20-49	3	
	<20	4	
Glasgow Coma Scale	15	0	APACHE IV
	13-14	1	(i) APACHE IV; or (ii) Delirium ICD-9: 290.11, 290.3, 291.0, 292.0, 292.82, 293.0, 293.1, 780.09(3); or (iii) Altered mental status ICD-9: 303.00(11), 305.20(10), 305.30(5), 305.40(17), 305.50(11), 305.60(6), 305.70(14), 305.90(31) (iv) Encephalopathy ICD-9: 042(58), 046.1(0), 265.1(1), 273.8(1), 290.12(6), 323.8, 348.1(2), 348.3, 349.82, 572.2(1), 768.5(1)
	10-12	2	APACHE IV
	6-9	3	APACHE IV
	<6	4	APACHE IV
Bilirubin, μmol/L	<20	0	Laboratory results: bilirubin
	20-32	1	
	33-101	2	
	102-204	3	
	>204	4	
Mean arterial pressure or vasoactive agents, μg/kg/min	No hypotension	0	Not applicable
	Mean arterial pressure <70 mm Hg	1	(i) APACHE IV; or (ii) Hypotension ICD-9: 458
	Dopamine ≤5 or dobutamine	2	(i) Shock or cardiogenic shock ICD-9: 758.5, 758.5, 958.4, 995.60; or (ii) Prescription of dopamine or dobutamine
	Dopamine >5, adrenaline ≤0.1, or noradrenaline ≤0.1	3	(i) Septic shock ICD-9: 648.91(1), 648.93(6), 785.59(2), 785.59(3); or (ii) Prescription of adrenaline or noradrenaline
	Dopamine >15, adrenaline >0.1, or noradrenaline >0.1	4	Not applicable
Creatinine, μmol/L	<110	0	Laboratory results: creatinine
	110-170	1	
	171-299	2	
	300-440 or urine <500 mL/day	3	
	>440 or urine <200 mL/h	4	
<b>Survival after Veno-Arterial ECMO score</b>			
<b>Components, unit</b>	<b>Value</b>	<b>Assigned score</b>	<b>Definitions or alternative ICD-9-CM codes</b>
Age, y	18-38	7	Not applicable
	39-5	4	
	53-62	3	
	≥63	0	
Weight, kg	<65	1	Not applicable
	65-89	2	
	>89	0	Obesity ICD-9: 278.0, 405.99(2), 648.90(31)

Abbreviations: APACHE IV = Acute Physiology and Chronic Health Evaluation IV; ECMO = extracorporeal membrane oxygenation; ICD-9-CM = International Classification of Diseases, Ninth Revision, Clinical Modification; ICU = intensive care unit

**SUPPLEMENTARY TABLE I. (cont'd)**

<b>Survival after Venous-Arterial ECMO score</b>			
<b>Components, unit</b>	<b>Value</b>	<b>Assigned score</b>	<b>Definitions or alternative ICD-9-CM codes</b>
Myocarditis	Yes	3	Myocarditis ICD-9: 032.82, 0336.43, 0.74.23, 0.93.82, 130.3, 391.2, 398.0, 422.0, 422.91, 422.92, 422.93, 429.0
Refractory ventricular tachycardia/ ventricular fibrillation	Yes	2	Cardiac dysrhythmia ICD-9: 427.0, 427.1, 427.4
Post-heart or lung transplantation	Yes	3	Heart or lung transplantation ICD-9: 33.5, 33.51, 33.59, 33.6, 37.5, 37.51, 37.59, V42.1, V42.6
Congenital heart disease	Yes	-3	Congenital heart disease ICD-9: 745, 746
Acute renal failure	Acute creatinine >132.6 µmol/L, with or without renal replacement therapy	-3	(i) Laboratory results: creatinine (ii) Renal replacement therapy ICD-9: 39.95, 54.98 (iii) Acute renal failure ICD-9: 584
Chronic renal failure	Creatinine >150 µmol/L for >3 mo	-6	(i) Laboratory results: creatinine (ii) Renal replacement therapy ICD-9: 39.95, 54.98 (iii) Chronic renal failure ICD-9: 585
Bicarbonate, mmol/L	≤15	-3	Laboratory results: bicarbonate
Duration of intubation prior to ECMO initiation, h	≤10	0	(i) APACHE IV
	11-29	-2	(ii) Compare ICU admission time and ECMO initiation time
	≥30	-4	
Peak inspiratory pressure, ≤20 cm H <sub>2</sub> O	Yes	3	Peak inspiratory pressure ICD-9: 011.6, 428.1(1), 480 to 487, 506.1, 518.4, 518.82(1), 518.4
Pre-ECMO cardiac arrest	Yes	-2	Cardiac arrest ICD-9: 99.60, 427.5, 997.1(996)
Pre-ECMO diastolic blood pressure ≥40 mm Hg	Yes	3	No prescription of dopamine, dobutamine, noradrenaline, or adrenaline
Pre-ECMO pulse pressure ≤20 mm Hg	Yes	-2	More than one prescription of dopamine, dobutamine, noradrenaline, or adrenaline
Liver failure	Yes	-3	(i) Laboratory results: bilirubin >33 µmol/L; or (ii) Laboratory results: serum aminotransferases >70 U/L
Central nervous system dysfunction	Yes	-3	Central nervous system ICD-9: 320 to 326, 330 to 337, 340 to 349, 430 to 438, 780.3, 850 to 854
<b>Respiratory ECMO Survival Prediction score</b>			
<b>Components, unit</b>	<b>Values</b>	<b>Assigned score</b>	<b>Definitions or alternative ICD-9-CM codes</b>
Age, y	18-49	0	Not applicable
	50-59	-2	
	≥60	-3	
Immunocompromised status at time of ECMO	Yes	-2	Immunocompromised status ICD-9: 042 to 044, 140 to 202, 571.2, 571.5, 571.6, V42
Mechanically ventilated before ECMO initiation	>7 d	0	(i) APACHE IV (ii) Compare ICU admission time and ECMO initiation time
	48 h to 7 d	1	
	48 h to 7 d	1	
	<48 h	3	
Viral pneumonia	Yes	3	Viral pneumonia ICD-9: 480
Bacterial pneumonia	Yes	3	Bacterial pneumonia ICD-9: 482
Asthma	Yes	11	Asthma ICD-9: 493
Trauma or burn	Yes	3	Trauma or burns ICD-9: 493, 958 to 959
Aspiration pneumonitis	Yes	5	Aspiration pneumonitis ICD-9: 507.0
Other acute respiratory diagnosis	Yes	1	Acute respiratory ICD-9: 510, 512, 515, 518.4
Non-respiratory or chronic respiratory diagnosis	Yes	0	Non-respiratory or chronic respiratory ICD-9: 494, 496, 508.8(1) to 508.8(3), 515, 516.3(2), 516.9(1), 958.8
History of central nervous system dysfunction	Yes	-7	Central nervous system ICD-9: 320 to 326, 330 to 337, 340 to 349, 430 to 438, 780.3, 850 to 854
Acute associated non-pulmonary infection	Yes	-3	Laboratory results involving bacterial and viral culture
Pre-ECMO neuromuscular blockade	Yes	1	Prescription of rocuronium, pancuronium, atracurium, vecuronium, or cisatracurium
Pre-ECMO nitric oxide	Yes	-1	(i) Nitric oxide ICD-9: 99.29 (27) (ii) Prescription of nitric oxide
Pre-ECMO bicarbonate infusion	Yes	-2	Prescription of sodium bicarbonate
Pre-ECMO cardiac arrest	Yes	-2	Cardiac arrest ICD-9: 99.60, 427.5, 997.1(996)
PaCO <sub>2</sub> , ≥10 kPa	Yes	-1	Laboratory results: pCO <sub>2</sub>
Peak inspiratory pressure ≥42 cm H <sub>2</sub> O	Yes	-1	Not applicable

**SUPPLEMENTARY TABLE 2. Definitions of extracorporeal membrane oxygenation (ECMO) complications****1. Haemorrhagic complications**

## Laboratory result

Transfusion of &gt;2 units of packed red blood cells within any 24-hour period between ECMO initiation and termination\*

\* Based on Extracorporeal Life Support Organization definition of major bleeding as “clinically overt bleeding associated with a transfusion requirement of one or more 10 mL/kg packed red blood cell (PRBC) transfusions in a 24-hour period”, assuming a mean body weight of 60 kg and a volume of 300 mL for each unit of PRBCs

Administration of recombinant factor VIIa (NovoSeven®) during the period between ECMO initiation and termination

## Gastrointestinal (GI) haemorrhage

## ICD-9-CM diagnosis codes

## ICD-9-CM procedure codes

456.8:1	Fundal varices with bleeding	42.23:0	Esophagoscopy
531.00:0	Acute stomach ulcer with haemorrhage	42.33:10	Oesophageal-gastro-duodenoscopy (OGD) with injection, oesophagus
531.40:0	Chronic gastric bleeding ulcer	42.33:13	OGD to control oesophageal bleeding
532.00:0	Duodenal ulcer, acute with haemorrhage	42.33:8	OGD with clipping, oesophagus
532.40:2	Bleeding duodenal erosion	44.43:1	OGD with injection, stomach/duodenum
535.01:0	Acute gastritis with haemorrhage	44.43:2	OGD with thermocoagulation, stomach/duodenum
535.41:1	Bleeding gastric erosion	44.43:4	OGD with clipping, stomach/duodenum
535.61:0	Duodenitis with haemorrhage	45.13:1	Esophagogastroduodenoscopy
537.84:2	Bleeding duodenal polyp	45.23:0	Diagnostic colonoscopy
537.89:6	Duodenal bleeding	45.24	Diagnostic flexible sigmoidoscopy
568.81:0	Hemoperitoneum, nontraumatic	45.28	Diagnostic sigmoidoscopy
568.81:2	Retroperitoneal hematoma, nontraumatic	45.33:3	Endo thermocoagulation, small bowel
569.3:1	Rectal bleeding	45.33:4	Endoscopic injection, small bowel
578.0:0	Hematemesis	45.43:2	Colonoscopy & control of bleeding
578.1:1	Melena	48.32:2	Colonoscopic electrocoagulation for rectal bleeding
578.9:0	GI haemorrhage	48.35:10	Colonoscopic argon plasma coagulation (APC), rectum
578.9:1	Per rectal bleeding	48.35:11	Sigmoidoscopic APC, rectum
578.9:3	Gastric bleeding	54.19:3	Laparotomy & haemostasis
578.9:4	Small bowel bleeding		
578.9:5	Colon bleeding		

## Mediastinal cannulation site bleeding

## ICD-9-CM diagnosis codes

423.0:0	Hemopericardium
423.0:1	Hemopericardium, post-acute myocardial infarction (AMI)
511.8:1	Haemothorax
511.8:4	Hemopneumothorax
861.00:3	Unspecified cardiac injury without open thoracic wound

## Surgical site bleeding

## ICD-9-CM diagnosis codes

## ICD-9-CM procedure codes

998.11:0	Haemorrhage complicating procedure	39.98:0	Control of haemorrhage
998.11:12	Postprocedural hemoperitoneum	39.98:1	Control of bleeding, sternotomy
998.11:13	Postprocedural bleed requiring re-operation		
998.11:16	Bleed from postprocedural abdominal wound		
998.11:19	Wound bleeding, postprocedural		
998.11:8	Postprocedural haemorrhage		
998.11:9	Wound bleeding		
998.12:0	Hematoma complicating procedure		
998.12:1	Postprocedural hematoma		
998.12:2	Wound hematoma		

**2. Neurologic complications**

## Brain death

## ICD-9-CM diagnosis codes

## ICD-9-CM procedure codes

348.8:1	Brain death	50.4:1	Remove liver from deceased donor
---------	-------------	--------	----------------------------------

Abbreviation: ICD-9-CM = International Classification of Diseases, Ninth Revision, Clinical Modification

**SUPPLEMENTARY TABLE 2. (cont'd)**

<b>2. Neurologic complications</b>			
Haemorrhagic stroke			
ICD-9-CM diagnosis codes		ICD-9-CM procedure codes	
430:00:00	Subarachnoid haemorrhage (SAH), nontraumatic	01.24:3	Craniotomy for clot evacuation
431:00:00	Intracerebral haemorrhage (ICH), nontraumatic		
431:07:00	ICH—intraventricular, nontraumatic		
431:08:00	Haemorrhagic from cerebral infarction		
432.1:0	Subdural hematoma (SDH), nontraumatic		
432.9:0	Intracranial haemorrhage, nontraumatic		
Ischaemic stroke			
ICD-9-CM diagnosis codes		ICD-9-CM procedure codes	
434.11:0	Cerebral embolism with infarction	01.24:1	Burr hole
434.91:0	Cerebral artery occlusion with infarction	01.25:3	Craniectomy for decompression
436:00:00	Acute cerebrovascular disease	02.2:10000	Ventricular drainage of cerebrospinal fluid (CSF)
<b>3. Renal complications</b>			
Renal replacement therapy required			
ICD-9-CM procedure codes			
39.95	Hemofiltration for acute care		
39.95:16	Hemodiafiltration for acute care		
39.95:4	Continuous arterio-venous (AV) hemofiltration		
39.95:5	Continuous veno-venous haemodialysis (CVVHD)		
39.95:6	Continuous veno-venous (VV) haemofiltration		
39.95:7	Acute hemofiltration		
39.95:8	Haemodialysis for chronic care		
39.95:9	Acute haemodialysis		
39.95:10	Acute hemodiafiltration		
39.95:13	Sustained low-efficiency haemodialysis		
39.95:15	Haemodialysis for acute care		
54.98:0	Peritoneal dialysis		
<b>4. Cardiovascular complications</b>			
Cardiopulmonary resuscitation required/cardiac arrest			
ICD-9-CM diagnosis codes		ICD-9-CM procedure codes	
427.5:0	Cardiac arrest	99.60:0	Cardiopulmonary resuscitation
427.5:1	Postoperative cardiac arrest with resuscitation	93.93:0	Nonmechanical resuscitation
427.5:2	Sudden cardiac death		
427.5:3	Cardiac arrest with successful resuscitation		
427.5:5	Cardiopulmonary arrest, postoperative		
Cardiac arrhythmia			
ICD-9-CM diagnosis codes			
427.0:0	Paroxysmal supraventricular tachycardia (PSVT)		
427.1:10	Regular wide complex tachycardia		
427.1	Sustained monomorphic ventricular tachycardia		
427.1:1	Torsades des pointes		
427.1:2	Ventricular tachycardia		
427.1:4	Idiopathic ventricular tachycardia		
427.1:5	Polymorphic ventricular tachycardia		
427.1:6	Ventricular tachycardia, non-sustained		
427.1:7	Ventricular tachycardia, sustained		
427.31	Paroxysmal atrial fibrillation		
427.31:0	Atrial fibrillation		
427.32:0	Atrial flutter		
427.41:0	Ventricular flutter		

**SUPPLEMENTARY TABLE 2. (cont'd)****4. Cardiovascular complications**

Cardiac arrhythmia

ICD-9-CM diagnosis codes

427.89:1 Supraventricular tachycardia

427.89:5 Idioventricular rhythm

427.89:15 Bradycardia

Cardiac tamponade/pericardiocentesis

ICD-9-CM diagnosis codes

423.9:2 Cardiac tamponade

423.9:3 Cardiac tamponade, postoperative

ICD-9-CM procedure codes

37.0:0 Pericardiocentesis

37.0:1 Pericardial tapping

37.0:2 Pericardial drainage

**5. Pulmonary complications**

Pneumothorax/chest drain insertion

ICD-9-CM diagnosis codes

512.0:0 Spontaneous tension pneumothorax

512.0:1 Pneumothorax, tension

512.1:0 Iatrogenic pneumothorax

512.1:2 Postoperative pneumothorax

512.8:0 Spontaneous pneumothorax

512.8:1 Pneumothorax

860.2:0 Trauma haemothorax, closed

ICD-9-CM procedure codes

33.93:1 Imaging-guided percutaneous drainage of pleural effusions

34.04:0 Intercostal catheter insertion

34.04:1 Chest drain insertion

34.04:5 Drain pleural cavity, percutaneous

**6. Metabolic complications**

Hyperbilirubinemia

Laboratory result

Total bilirubin &gt;170 µmol/L

Haemolysis

Laboratory result

Plasma free haemoglobin ≥50 mg/dL for 2 consecutive days

Convert CDARS laboratory result from (mg/L) to (mg/dL): 1 mg/dL = 10 mg/L

Drop patients with plasma haemoglobin &lt;50 mg/dL or with one laboratory result only

**7. Limb complications**

Limb compartment syndrome

ICD-9-CM diagnosis codes

729.9:5 Compartment syndrome, nontraumatic

958.8:1 Compartment syndrome

Fasciotomy

ICD-9-CM procedure codes

83.14:0 Fasciotomy

Limb amputation

ICD-9-CM diagnosis codes

997.62:0 Infected amputated stump

E878.5:0 Abnormal reaction-limb amputation

V49.76:0 Above knee amputation status

V49.77:0 Hip amputation status

V49.78:0 Bilateral lower limb amputation status

ICD-9-CM procedure codes

84.11:1 Ray amputation of foot

84.12:1 Forefoot amputation

84.12:3 Trans metatarsal amputation

84.14:1 Syme amputation

84.15:3 Below knee amputation, right

84.16:1 Through knee amputation

84.17:1 Left above knee amputation

84.17:2 Right above knee amputation

84.18:0 Disarticulation of hip

84.3:14 Revision above knee amp/stump

84.46:0 Fit below knee prosthesis

84.47:0 Fitting of leg prosthesis

**SUPPLEMENTARY TABLE 3. Extracorporeal membrane oxygenation (ECMO) centres and ECMO consoles in Hong Kong from 2010 to 2021\***

Year	List of centres	Total No. of consoles
2010	PWH, QEH, QMH	3
2014	PWH, QEH, QMH, PMH	4
2015	PWH, QEH, QMH, PMH, PYNEH	9
2019	PWH, QEH, QMH, PMH, PYNEH, UCH, TMH	11
2021	PWH, QEH, QMH, PMH, PYNEH, UCH, TMH	16
Others*		7

Abbreviations: PMH = Princess Margaret Hospital; PWH = Prince of Wales Hospital; PYNEH = Pamela Youde Nethersole Eastern Hospital; QEH = Queen Elizabeth Hospital; QMH = Queen Mary Hospital; TMH = Tuen Mun Hospital; UCH = United Christian Hospital

\* ECMO consoles allocated by non-Hospital Authority resources (eg, private donations) where the year of introduction is unclear as there is no central stock-taking of these consoles

**SUPPLEMENTARY TABLE 4. Mortality rates according to extracorporeal membrane oxygenation (ECMO) configuration\***

Type of ECMO	ELSO reported hospital mortality <sup>1</sup>	Hospital mortality	ICU mortality
V-V ECMO	13 999/34 319 (40.8%)	152/448 (33.9%)	133/448 (29.7%)
V-A ECMO	18 350/33 115 (55.4%)	177/296 (59.8%)	139/296 (47.0%)
ECPR	7211/10 324 (69.8%)	126/164 (76.8%)	109/164 (66.5%)
V-VA ECMO	/	0/1 (0%)	0/1 (0%)
VV-A ECMO	/	1/1 (100%)	1/1 (100%)
VV-V ECMO	/	0/1 (0%)	0/1 (0%)
Total	39 560/77 758 (50.9%)	456/911 (50.1%)	382/911 (41.9%)

Abbreviations: ECPR = extracorporeal cardiopulmonary resuscitation; ELSO = Extracorporeal Life Support Organization; ICU = intensive care unit; V-A = veno-arterial; V-V = veno-venous; V-VA = veno-venoarterial; VV-A = venovenous-arterial; VV-V = venovenous-venous

\* Data are shown as No. (%)

## Reference

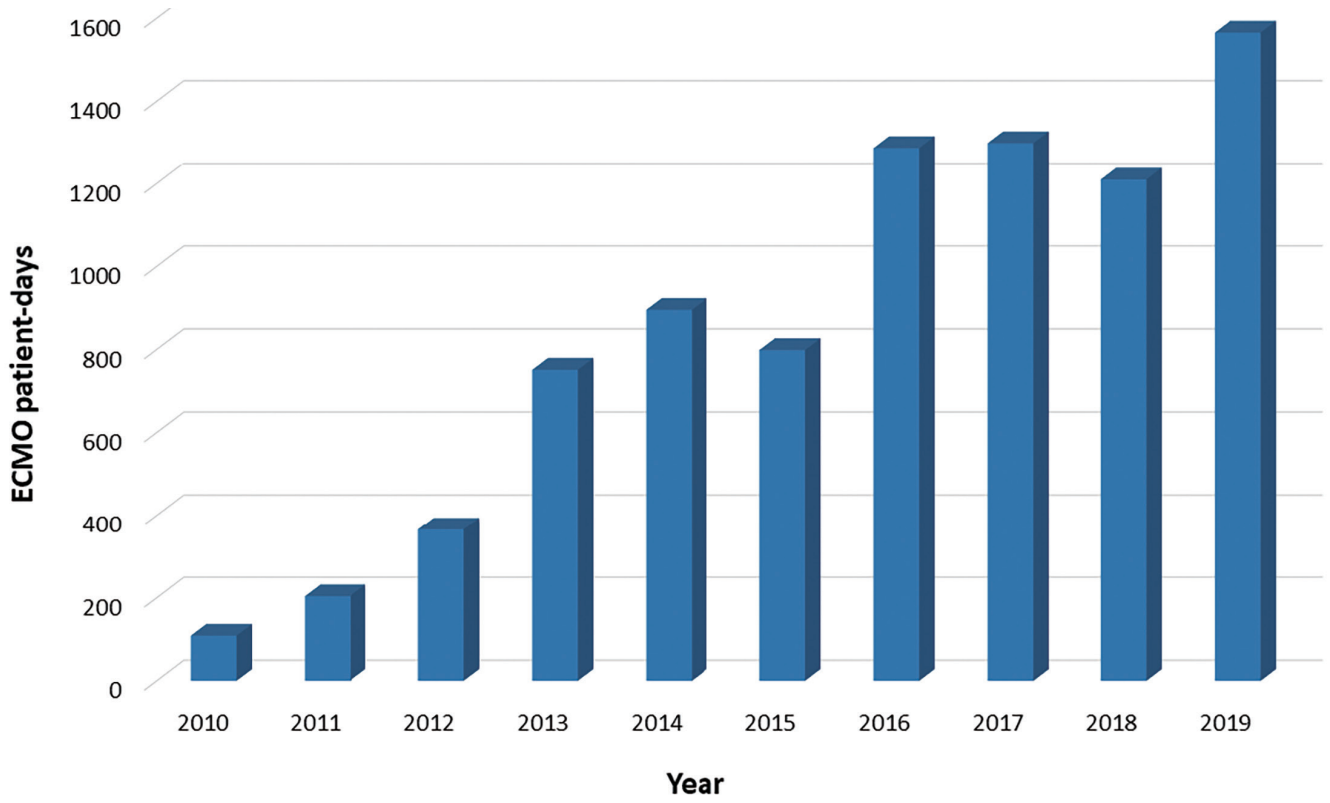
1. Extracorporeal Life Support Organization. ECLS Registry Report. International Summary. October 2021. Report data through 2020. Available from: [https://www.elseo.org/Portals/0/Files/Reports/2021\\_October/International%20Report%20October\\_page1.pdf](https://www.elseo.org/Portals/0/Files/Reports/2021_October/International%20Report%20October_page1.pdf). Accessed 23 Feb 2022.

**SUPPLEMENTARY TABLE 5. Unadjusted and adjusted outcomes of patient subgroups**

Patient subgroups	Hospital mortality, No. (%)	P value	Unadjusted OR (95% CI)	P value	Adjusted OR (95% CI)	P value
Emergency admission						
Yes	345/710 (48.6%)	0.10	0.77 (0.56-1.05)	0.10	0.78 (0.54-1.12)	0.17
No	111/201 (55.2%)					
ECMO initiation within 24 hours of emergency admission						
Yes	191/370 (51.6%)	0.43	1.11 (0.85-1.45)	0.43	0.56 (0.40-0.78)	0.001
No	265/541 (49.0%)					
Inter-hospital transfer						
Yes	82/222 (36.9%)	<0.001	0.49 (0.36-0.67)	<0.001	0.74 (0.52-1.05)	0.09
No	374/689 (54.3%)					
Quaternary CTS transfer						
Yes	25/52 (48.1%)	0.77	0.92 (0.53-1.61)	0.77	0.58 (0.30-1.13)	0.11
No	431/859 (50.2%)					

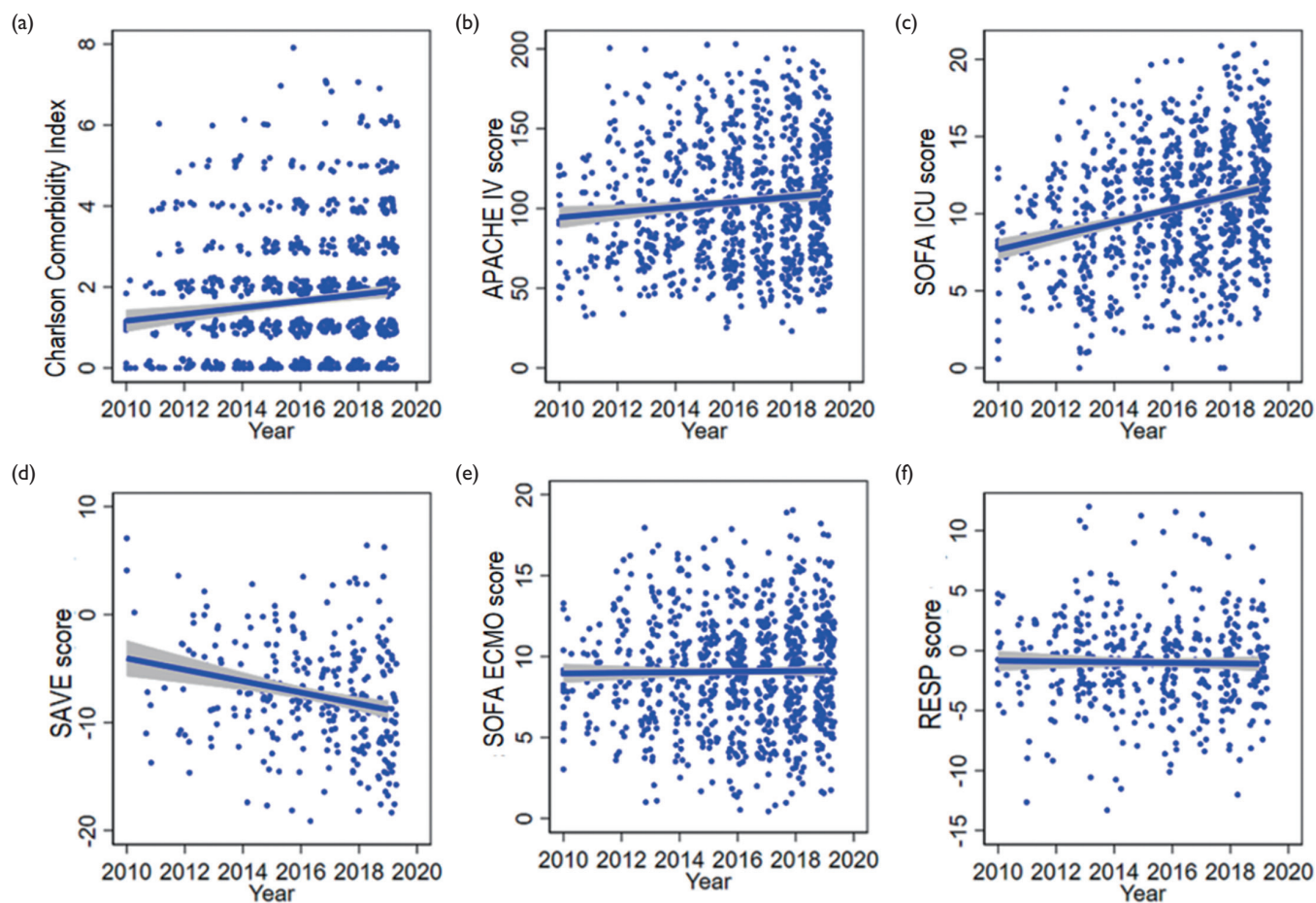
Abbreviations: CI = confidence interval; CTS = cardiothoracic surgery; ECMO = extracorporeal membrane oxygenation; OR = odds ratio

**SUPPLEMENTARY FIG I. Total number of extracorporeal membrane oxygenation patient-days from 2010 to 2019**



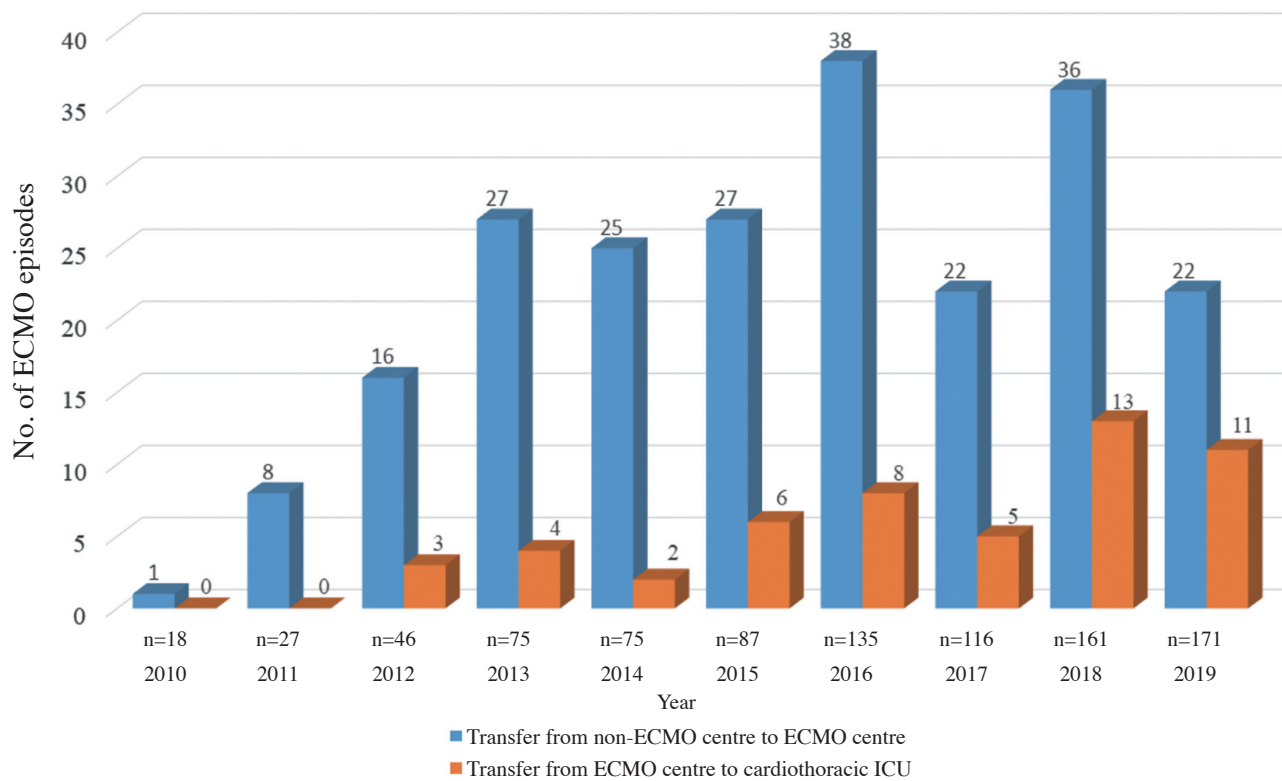


**SUPPLEMENTARY FIG 2. Trends in co-morbidities and disease severity scores. Significant trends were observed in the Charlson Comorbidity Index ([a]; P for trend<0.001), APACHE IV score ([b]; P for trend=0.003), SOFA score on the first day of ICU admission ([c]; P for trend<0.001), and SAVE score in patients receiving V-A ECMO ([d]; P for trend<0.001) from 2010 to 2019. No significant trends were observed in the SOFA score on the day of ECMO initiation ([e]; P for trend=0.58) or RESP score in patients receiving V-V ECMO ([f]; P for trend=0.46)**



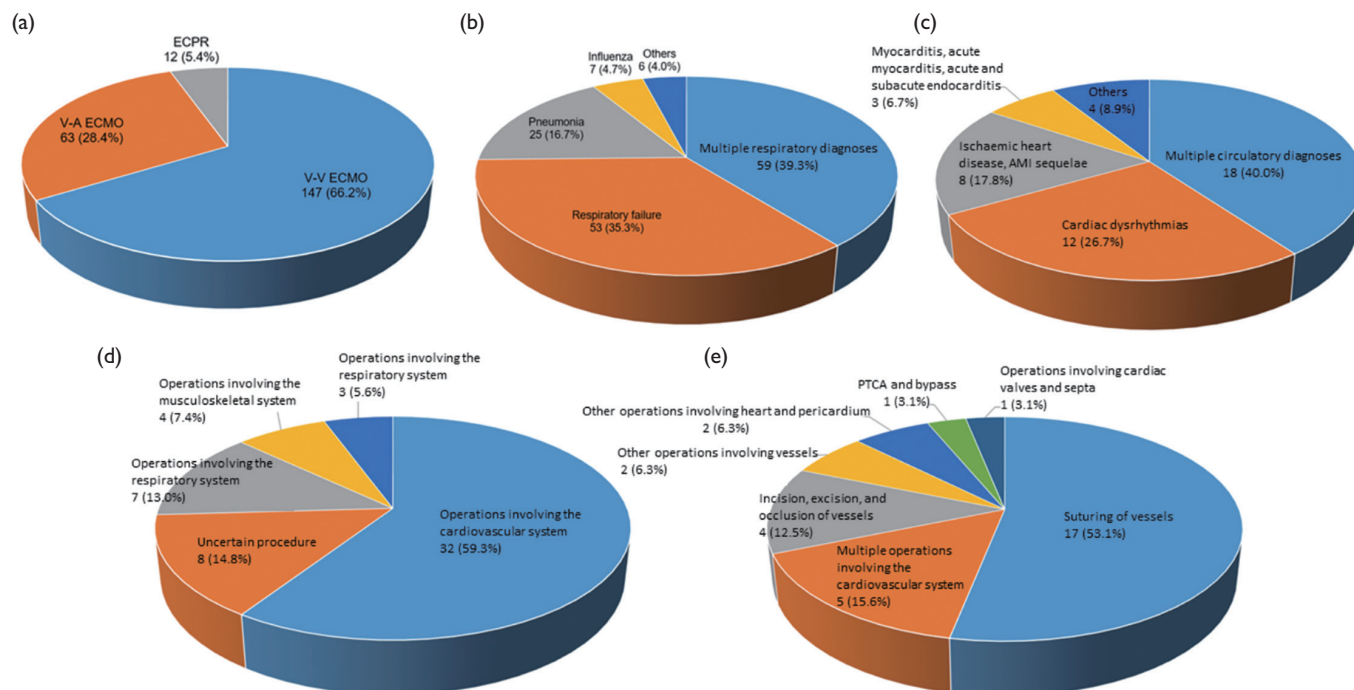
Abbreviations: APACHE IV = Acute Physiology and Chronic Health Evaluation IV; ECMO = extracorporeal membrane oxygenation; ICU = intensive care unit; RESP = Respiratory ECMO Survival Prediction; SAVE = Survival after Veno-Arterial ECMO; SOFA = Sequential Organ Failure Assessment; V-A = veno-arterial; V-V = veno-venous

**SUPPLEMENTARY FIG 3. Number of inter-hospital transfers during the study period**



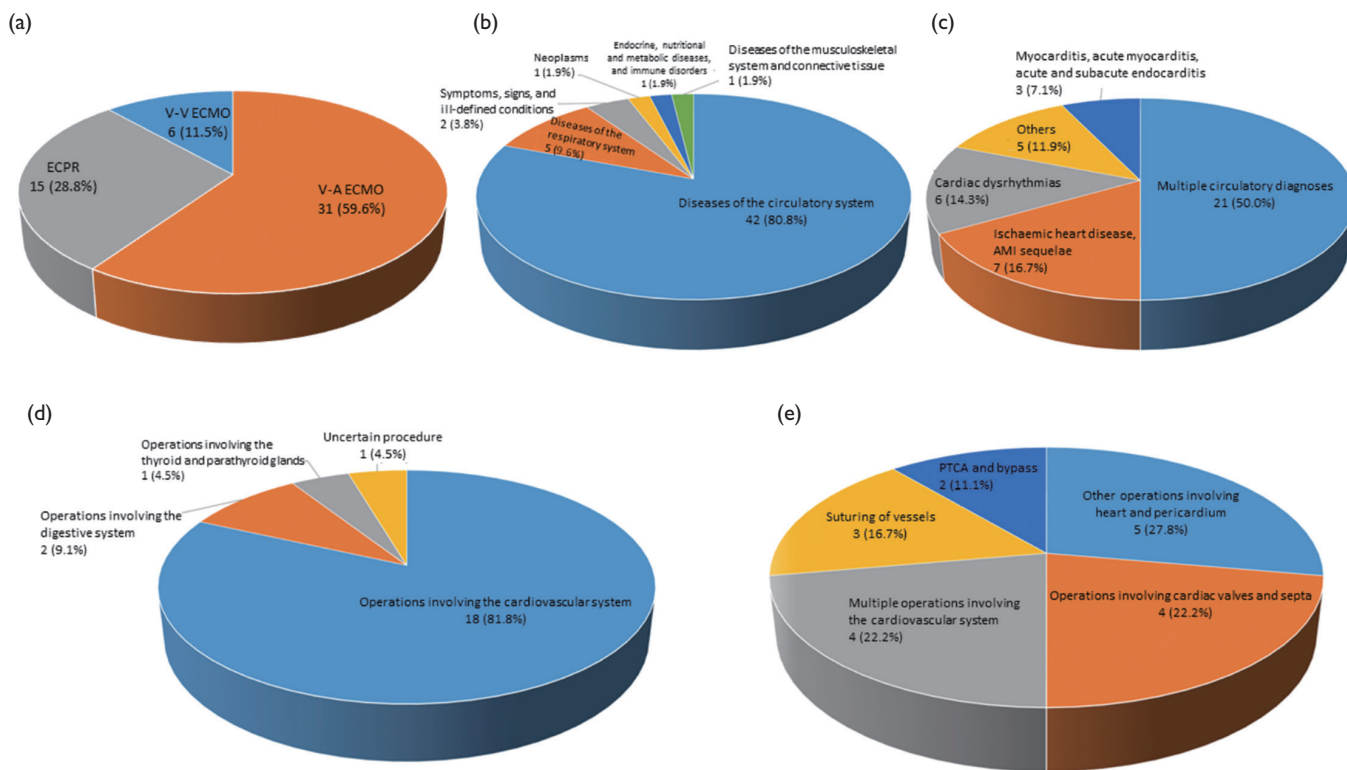
Abbreviations: ECMO = extracorporeal membrane oxygenation; ICU = intensive care unit

**SUPPLEMENTARY FIG 4. Characteristics of patients requiring inter-hospital transfer from non-extracorporeal membrane oxygenation (ECMO) centre to ECMO centre. (a) Distribution of types of ECMO (n=222). (b) Principal diagnosis involving the respiratory system (n=150). (c) Principal diagnosis involving the circulatory system (n=45). (d) Distribution of major procedures according to system within 7 days of transfer (n=54). (e) Details of major procedures involving the cardiovascular system (n=32)**



Abbreviations: AMI = acute myocardial infarction; ECMO = extracorporeal membrane oxygenation; ECPR = extracorporeal cardiopulmonary resuscitation; PTCA = percutaneous transluminal coronary angioplasty; V-A = veno-arterial; V-V = veno-venous

**SUPPLEMENTARY FIG 5. Characteristics of patients requiring inter-hospital transfer from extracorporeal membrane oxygenation (ECMO) centre to quaternary cardiothoracic intensive care unit. (a) Distribution of types of ECMO (n=52). (b) Principal diagnosis according to system classification (n=52). (c) Principal diagnosis involving the circulatory system (n=42). (d) Distribution of major procedures according to system within 28 days of transfer (n=22). (e) Details of major procedures involving the cardiovascular system (n=18)**



Abbreviations: AMI = acute myocardial infarction; ECPR = extracorporeal cardiopulmonary resuscitation; PTCA = percutaneous transluminal coronary angioplasty; V-A = veno-arterial; V-V = veno-venous