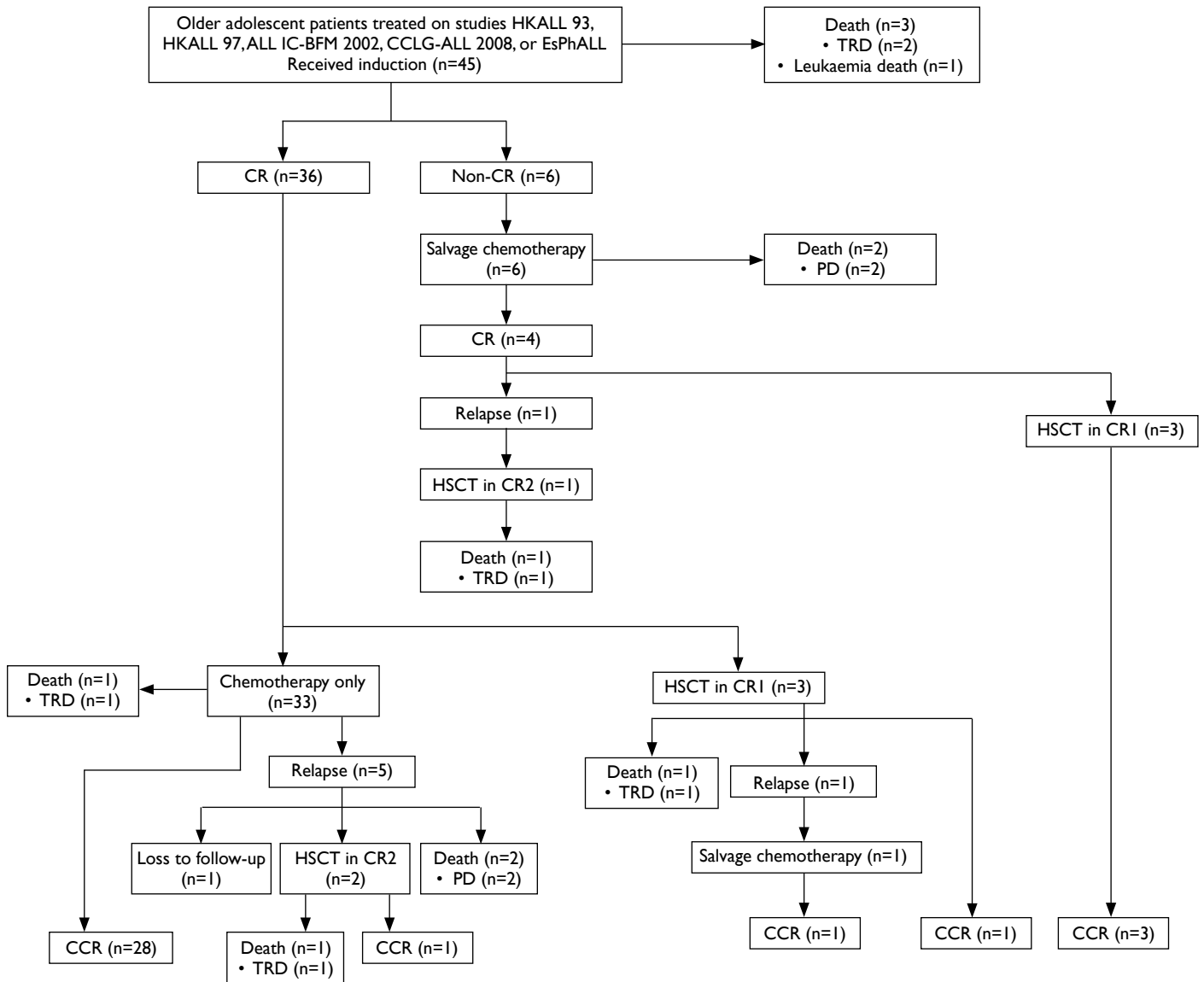


SUPPLEMENTARY FIG. Treatments and outcomes of 45 older adolescents with acute lymphoblastic leukaemia



Abbreviations: CCR = continuous complete remission; CR = complete remission; CR1 = first complete remission; CR2 = second complete remission; EsPhALL = European intergroup study of post-induction treatment of Philadelphia-chromosome-positive acute lymphoblastic leukaemia; HSCT = haematopoietic stem cell transplantation; PD = progressive disease; TRD = treatment-related death